



1 Springwater flows throughout the year





2 Springs contributing to a river





3 Religious and cultural services of a spring





4 Woman drinking spring water





5 Woman cooking using spring water





6 Woman washing clothes using spring water





7 Man taking a bath using spring water





8 Washing dishes using spring water





9 Man giving spring water to livestock





10 Man watering vegetables using spring water





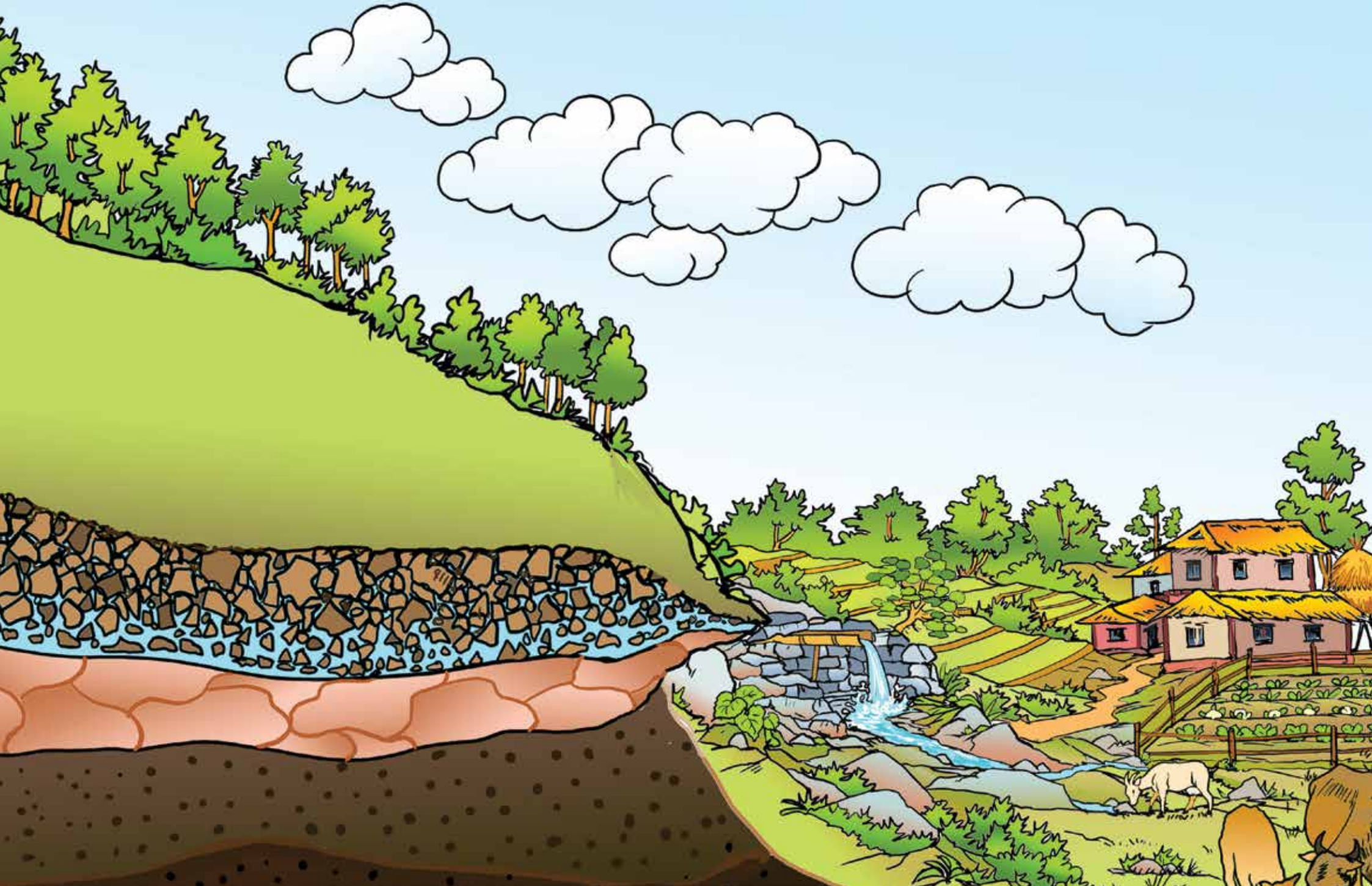
11 Micro-hydro electricity generation from springs





12 Agricultural system dependent on spring water





13 Intact ecosystem and sufficient spring water





14 Managed land with sufficient springwater





15 Plentiful spring water during the rainy season





16 Limited spring water during the dry season





17 Spring in high altitude mountains





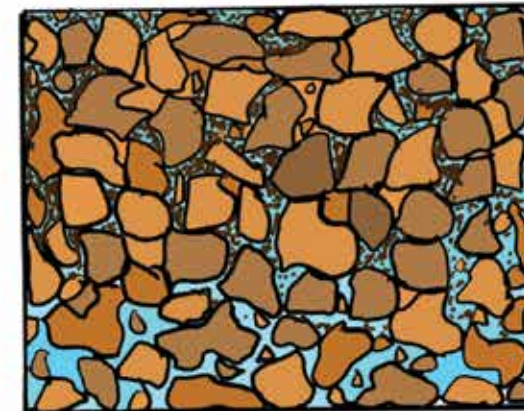
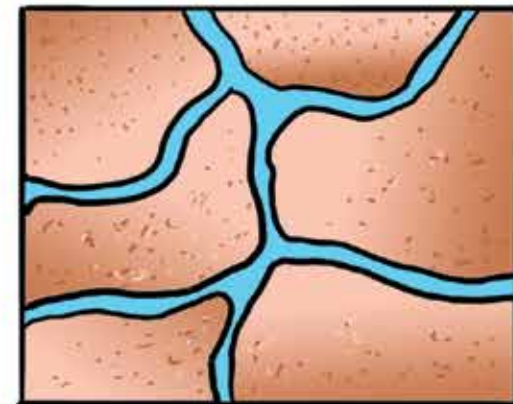
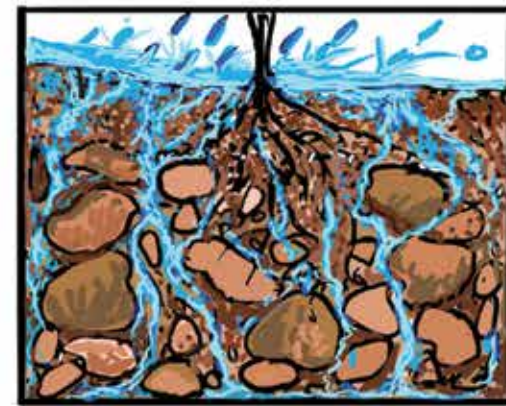
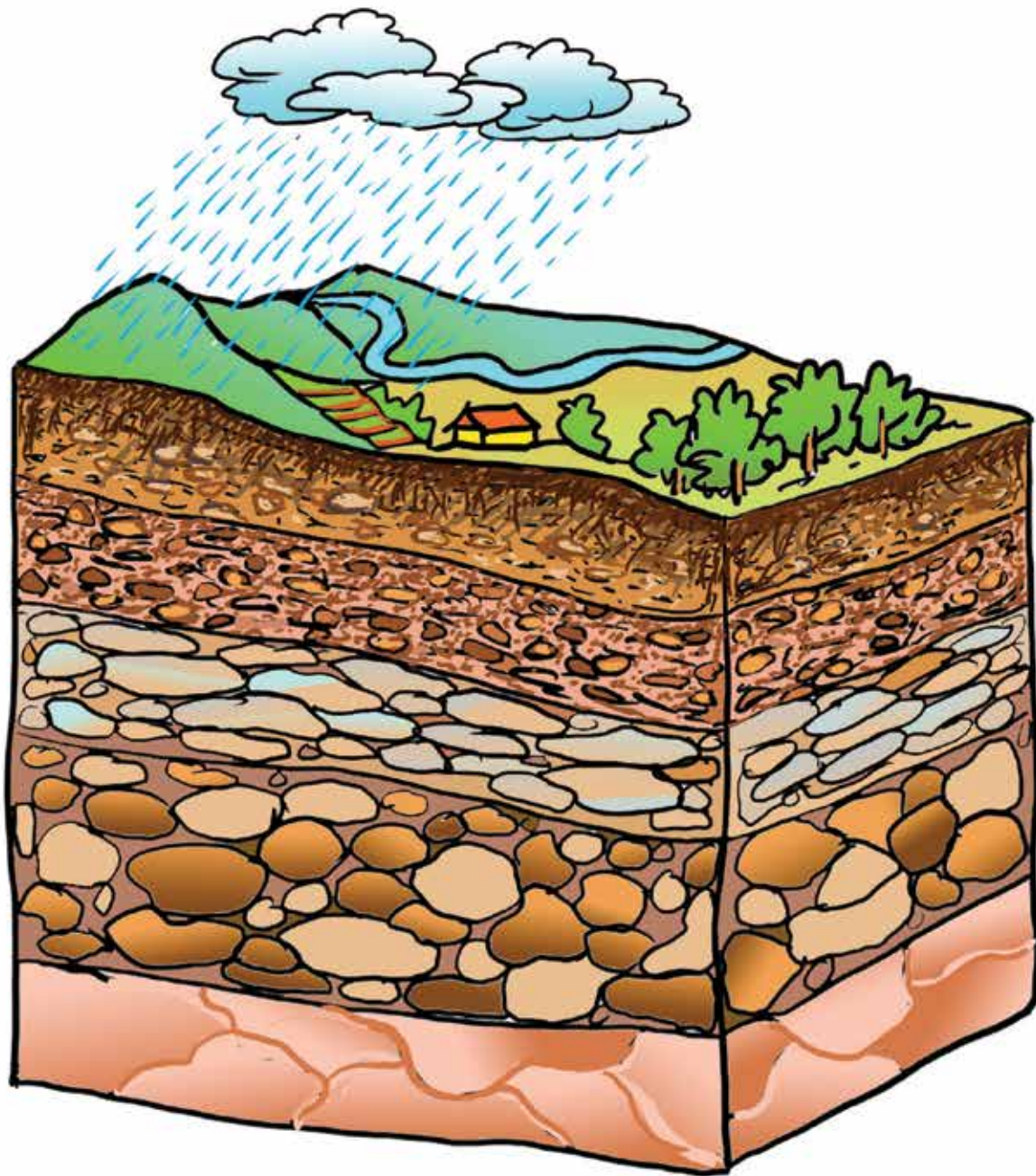
18 Spring in the plains





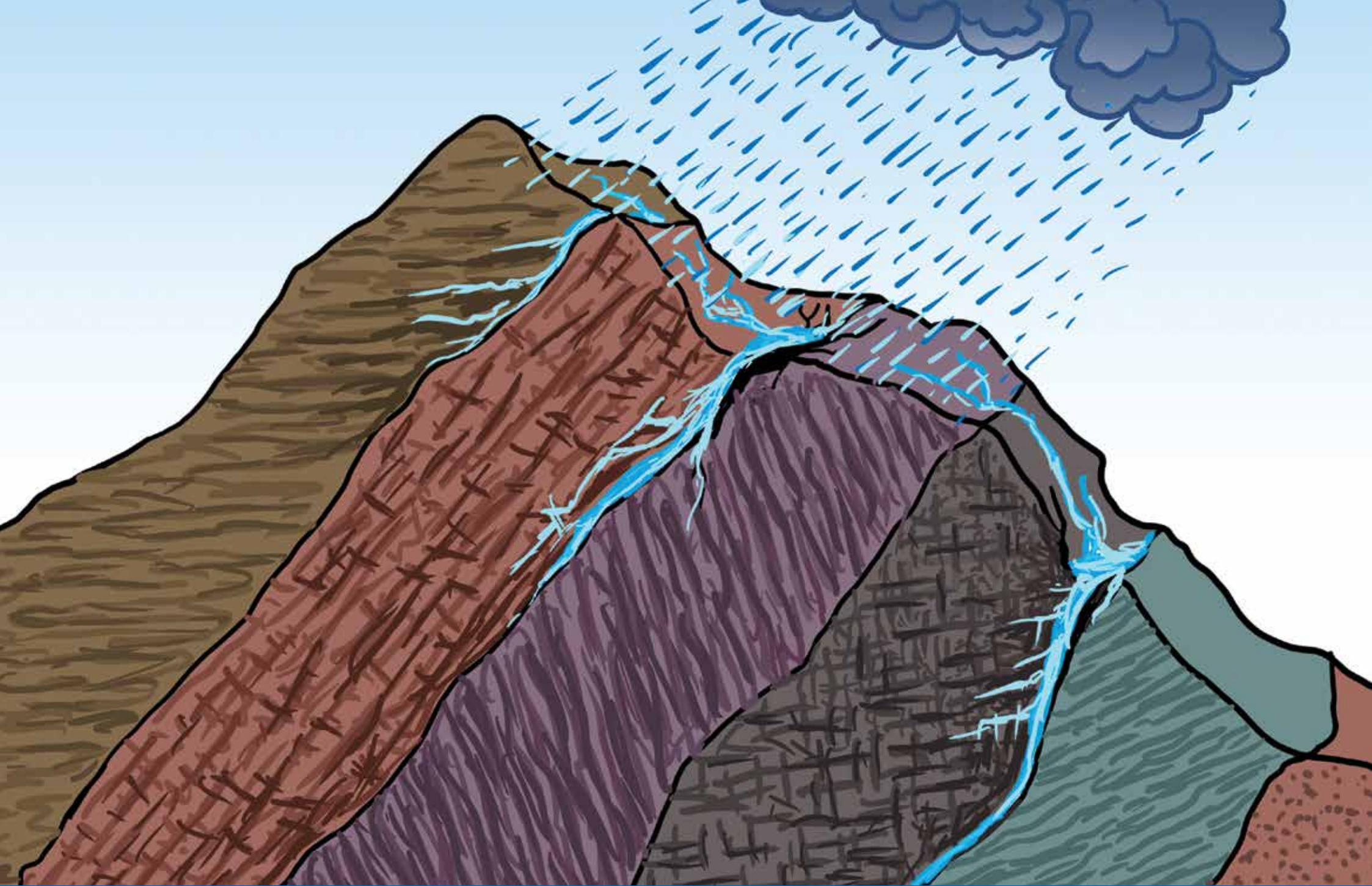
19 Water cycle





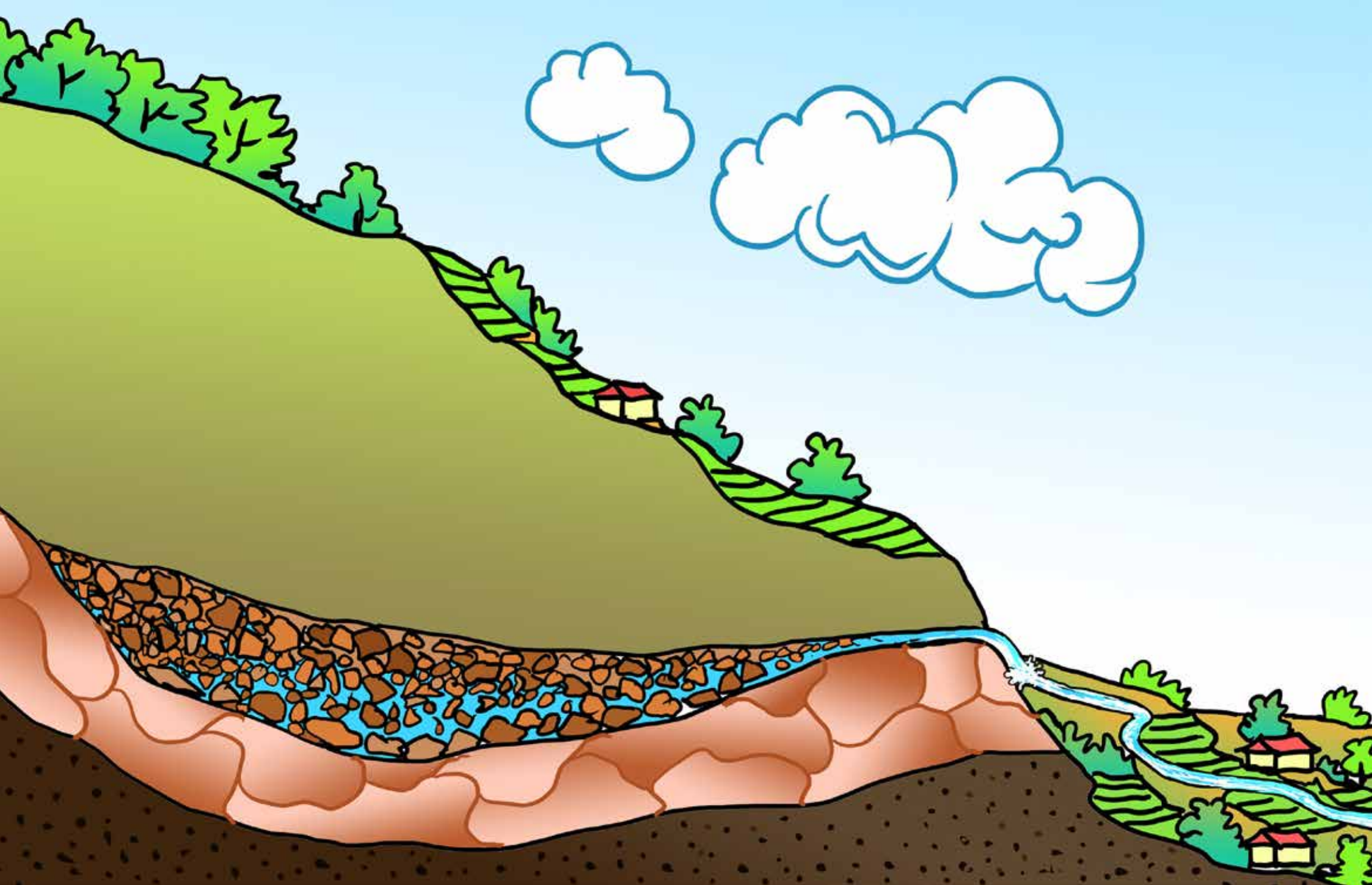
20 Water stored in the ground





21 Groundwater movement inside rocks





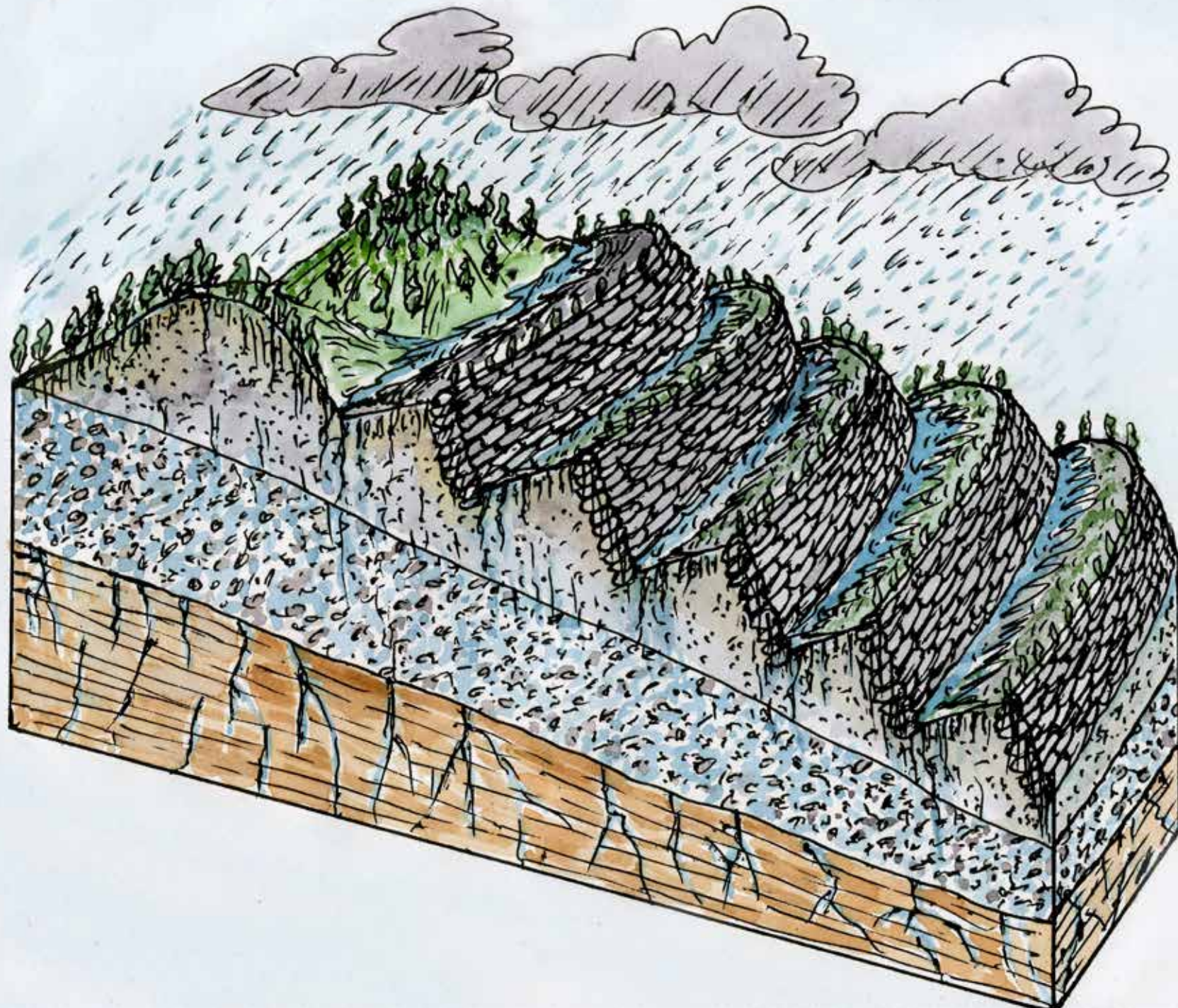
22 Groundwater coming to the surface





23 Good quality spring water as a result of good land management



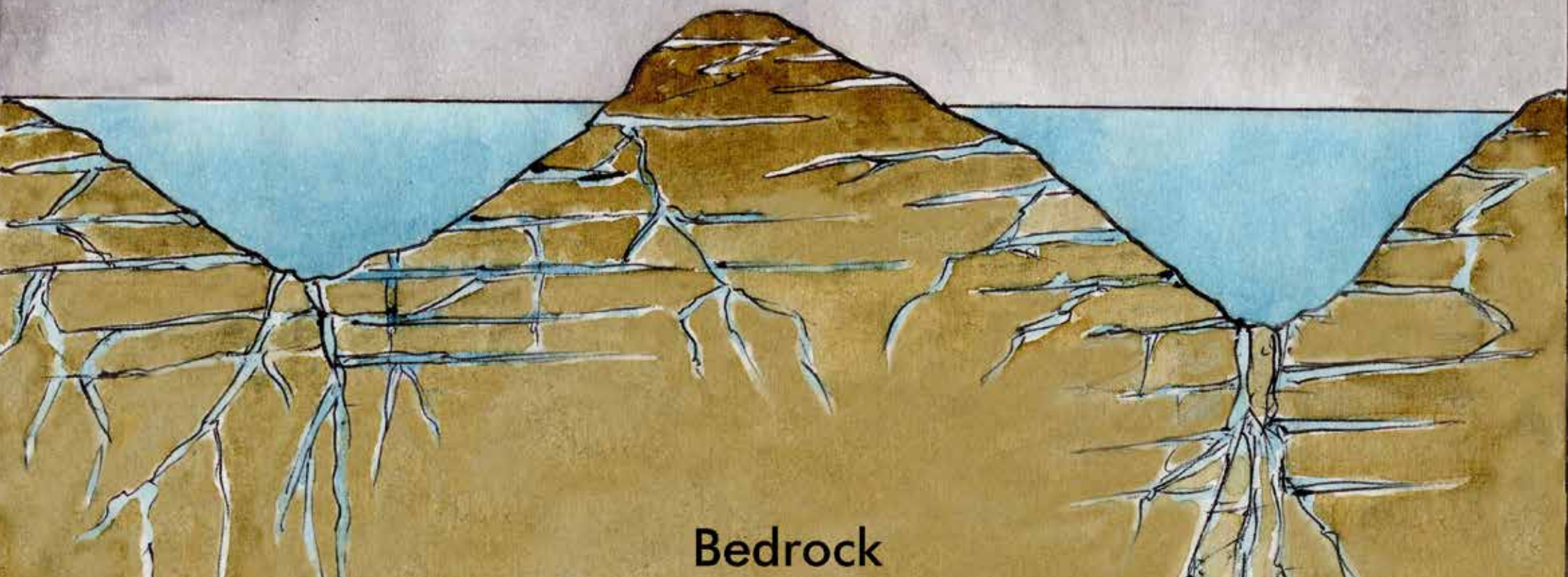


24 Soil ecosystem storing water





Weathered zone



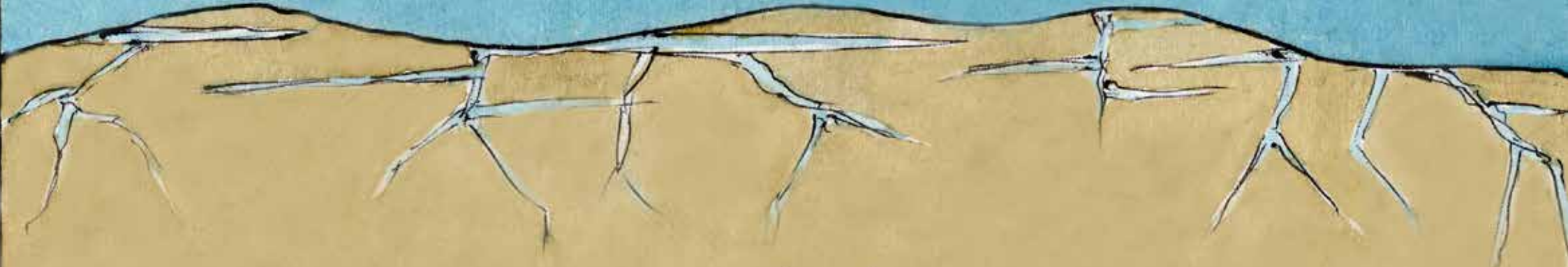
Bedrock

25 Soft rocks storing and transmitting a large amount of water





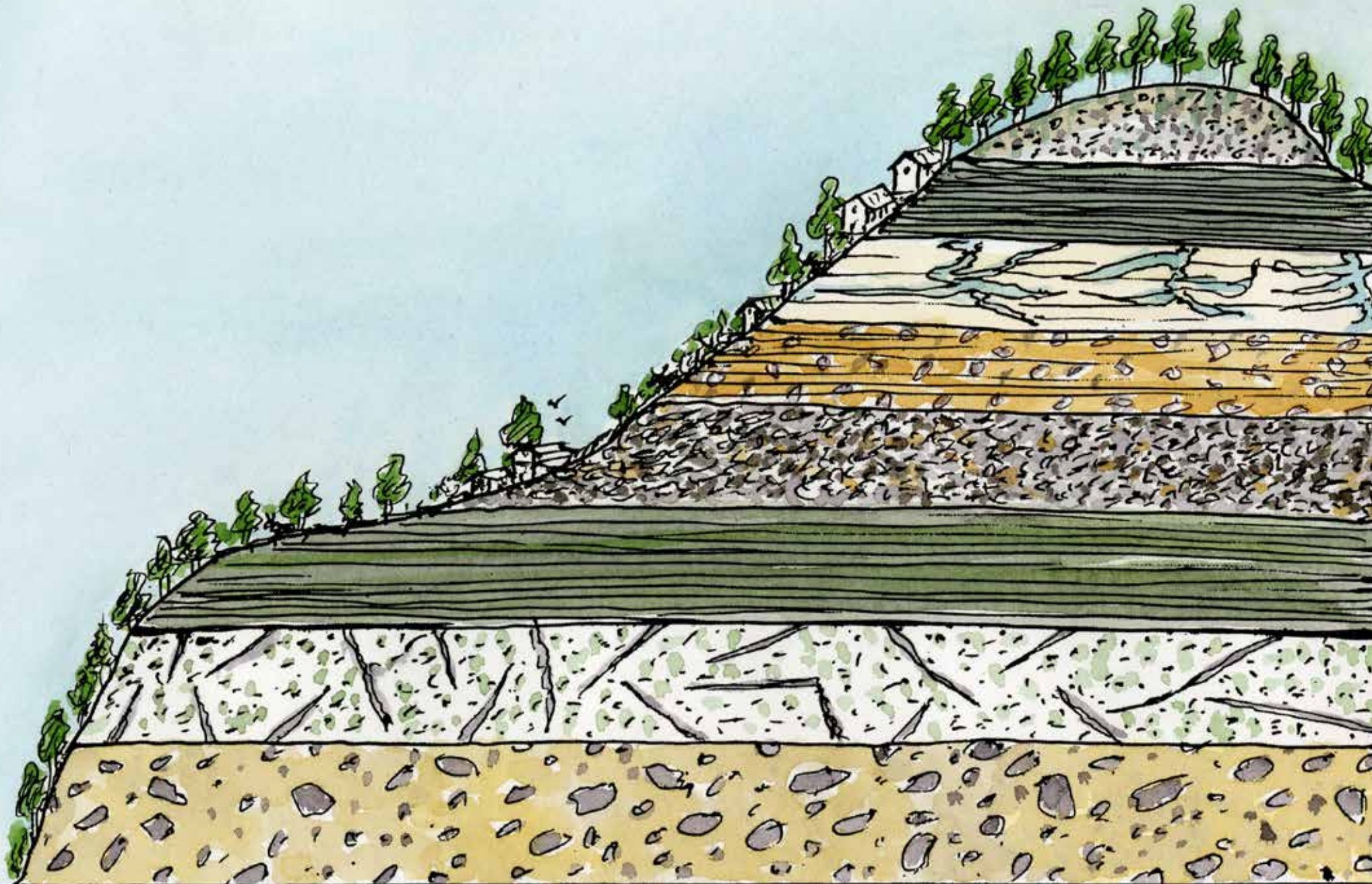
Weathered zone



Bedrock

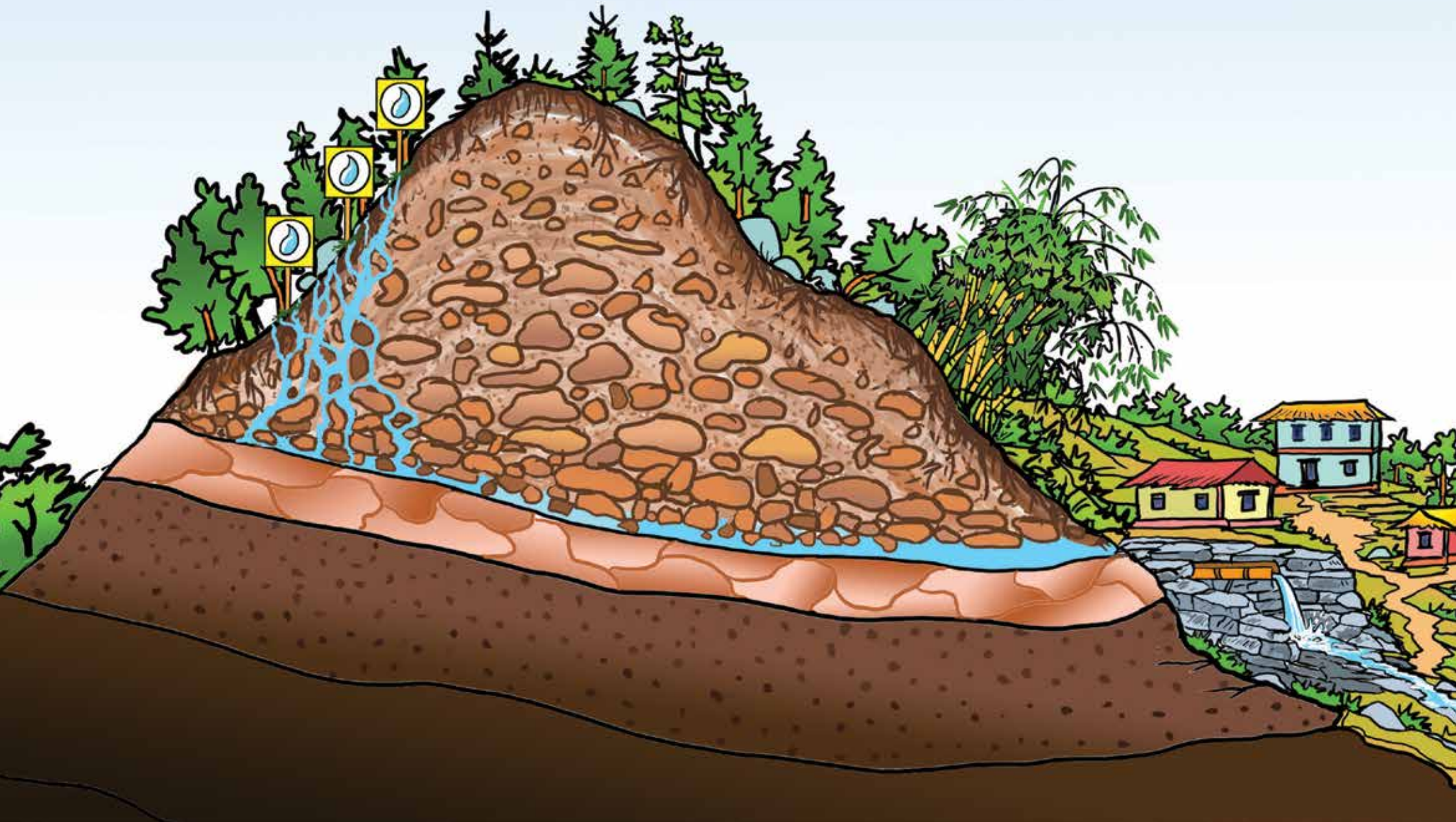
26 Hard rocks storing limited water, but not transmitting water





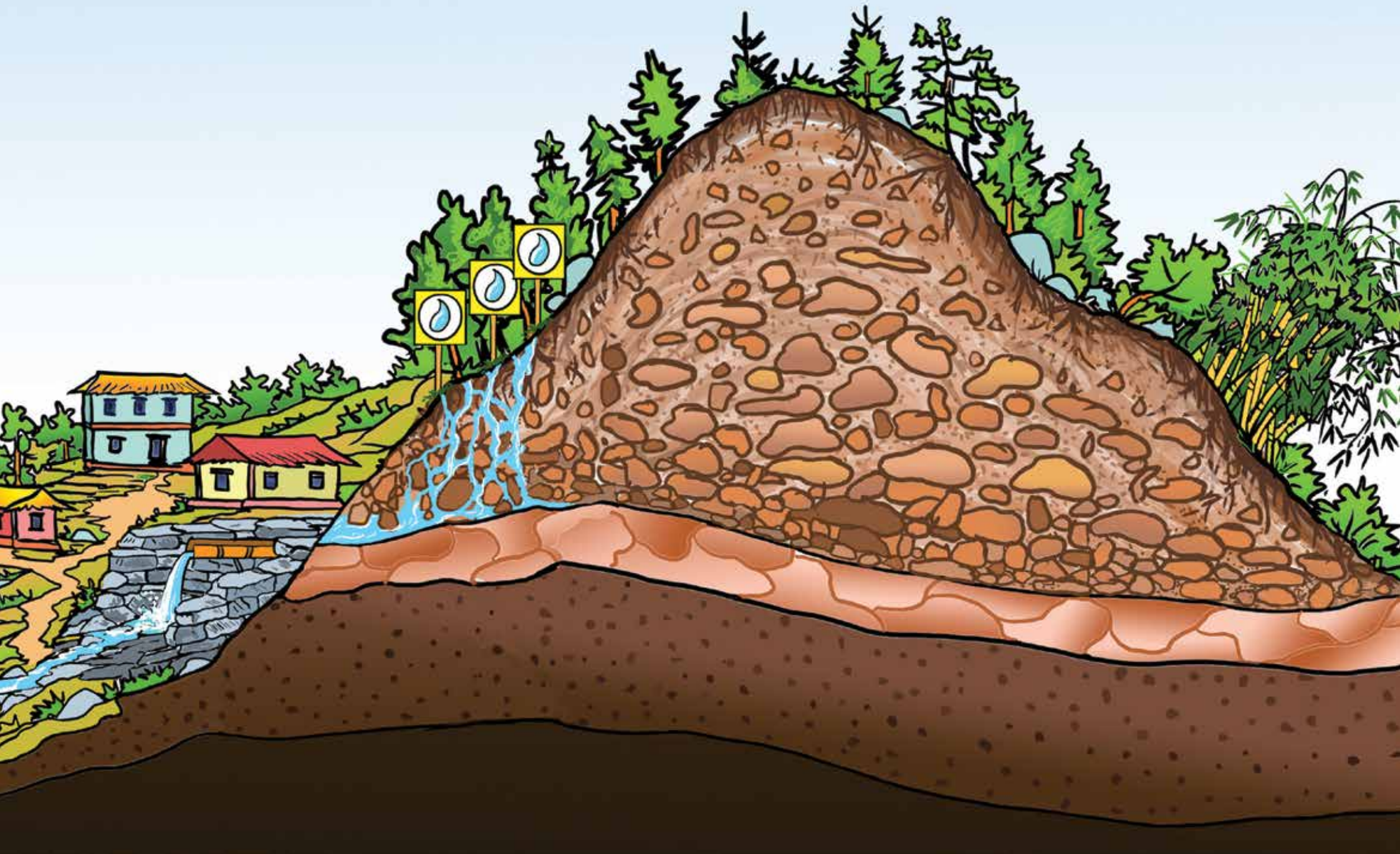
27 Soil layers





28 Recharge area far away from the spring





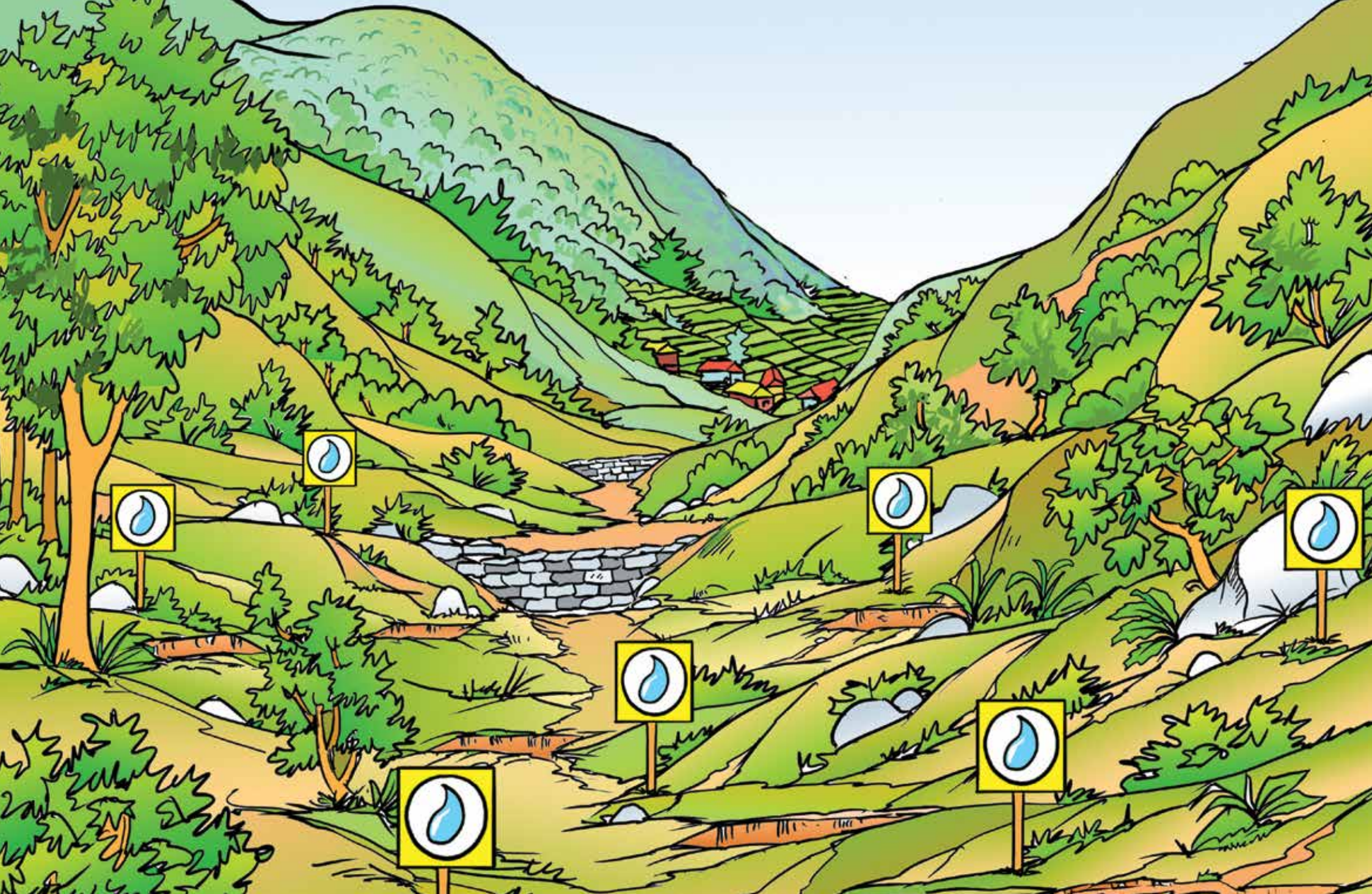
29 Recharge area close to the spring





30 Marked recharge area close to the spring





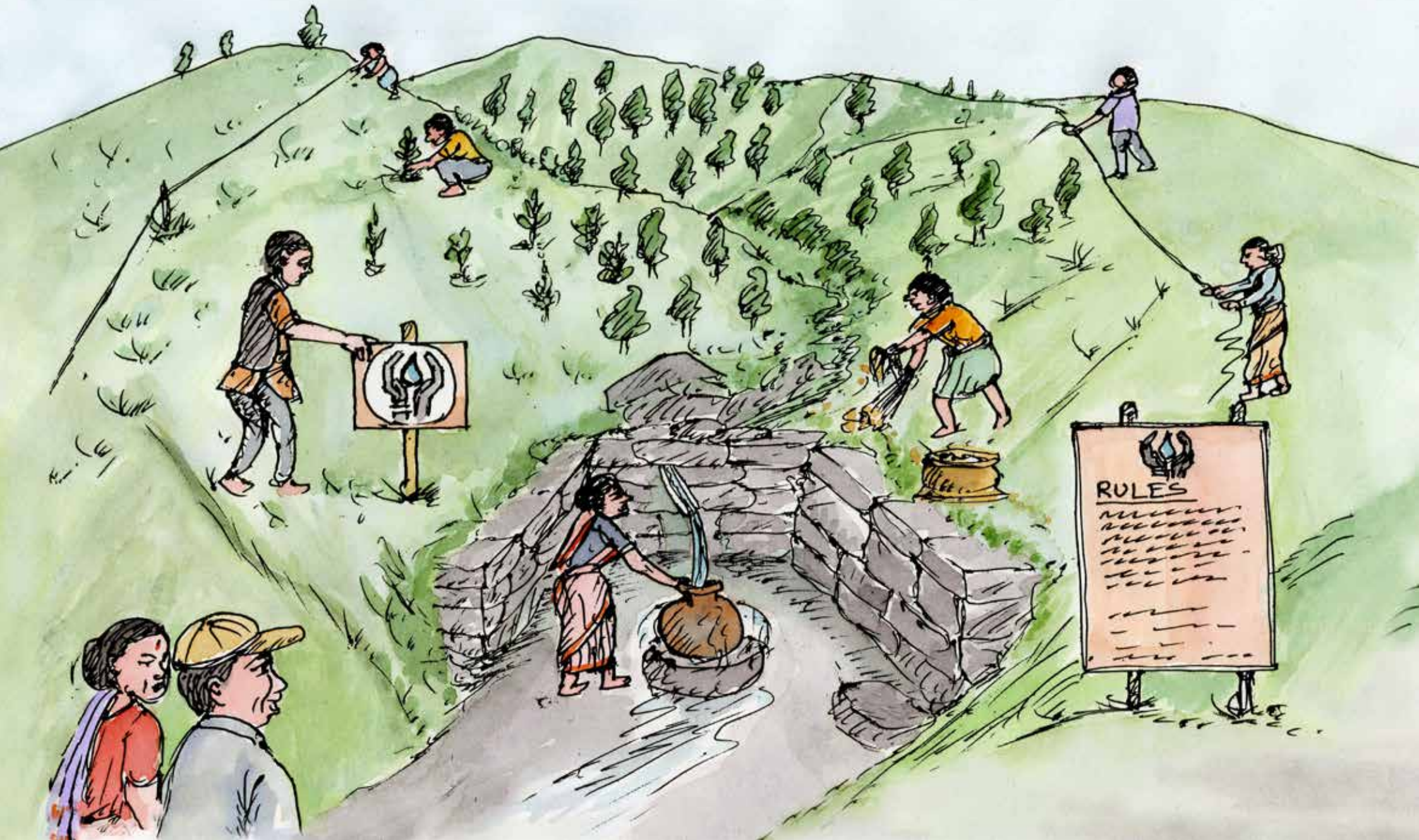
31 Marked recharge area





32 Local community and experts visiting the recharge area





33 Well-managed recharge area





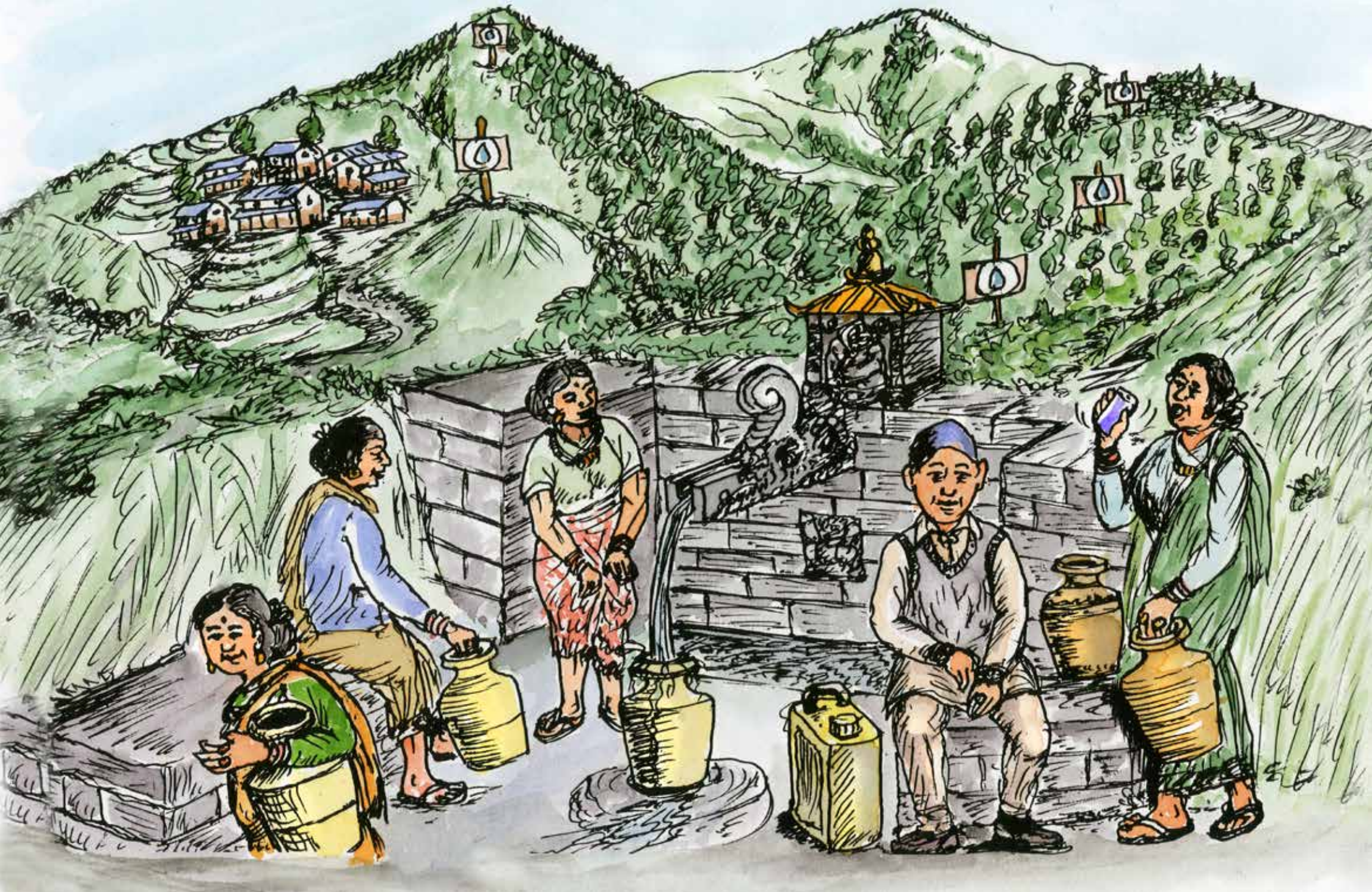
34 Impacts of low spring discharge and water scarcity





35 Lower caste people at a spring





36 Higher caste people at a spring





37 Distribution and ownership problems





38 Water user group for equal distribution





39 High spring discharge before an earthquake





40 No spring discharge after an earthquake

